



## PENNINE MOUNTAIN BIKE ASSOCIATION

Members report 2012/ 2013

### Introduction

By Andy MacNae  
Chairman

Welcome to our third annual members report. How time flies! It has been a year of great progress and one where PMBA has evolved significantly as an organisation. In his review of the year Bill Ould will take us through all of this and highlight just what PMBA has been able to achieve with your support. But if I was to sum things up I would say that we can now feel confident in claiming that we have a mix of riding here to match anything in the country and that Mountain Biking in Lancashire and West Yorkshire is well and truly on the map!



Looking forward your support is going to be even more important as we enter into what I think will be a pivotal year. In the next 12 months we hope to see:

- The opening of Ride On's cycling centre at Futures Park, Bacup (below Lee Quarry)
- The launch of the 9 'Rolling Boar' loop routes which link improved bridleways to give 100's of km of quality riding starting from the base of Lee Quarry.
- New trail maps and other rider information made available via an improved PMBA website
- Funding for new sets of trails, for example Dunnockshaw woodland, put together by PMBA with support from partners.
- A set of new events to link with the TDF and the launch of new trails. Very likely to include a strong Enduro element.
- New funding to support projects to get young people into riding and to build their skills.



Draft proposals for Dunnockshaw

So exciting times! And it is our members that give us the credibility to make these things happen. So many thanks for your support to date and hopefully in the future!

All the best

Andy

## Review of the year

*By Bill Ould*

*Vice Chairman*

Pennine Mountain Bike Action (**PMBA**) was born already 3 years ago, and the truth is that we are still finding our forte – our true strength and power. We are a very different organisation today than we expected to be when we made those first exchanges of conversation. We had ambitions to be influential by volunteer power, building on the successes of Healey Nab, Lee Quarry and Gisburn in mobilising trail builders to repair existing and construct new features and extend trail networks. That is why we included Action in our title – it was all about doing something, taking action. Well, we have taken some actions and pretty successfully: just look at the way the volunteer effort has extended the riding at Gisburn. We also recognise with a little care in planning and construction the trail sections have each taken on their special character adding to the richness of the riding experience. **PMBA** do not claim responsibility for this but recognise, celebrate, and promote a wider application of the enrichment and rider development practices, including skills loops and pump tracks. Our drive to improve access has caused us to become aligned to the CTC Right to Ride campaign, to join Strategy meetings and to join Access Forums wherever possible in the region.



Support for volunteer trail building teams is a key area of PMBA's work

**PMBA** is not only making a difference to the riding but also in the way projects are organised and funded. When PMBA was formed many of the funding sponsors were worked dry, so we expected that the bulk of the new work would be funded by the subscriptions of individual members. Donations from Corporate members were expected to be absorbed in the administrative machine, and publicity costs. As it turns out the financial turnover of PMBA vastly exceeds that which would be possible using such subscriptions, the higher level income being attracted by the skilful appeal to funding sources, matched funding from local authorities to support community projects and the successful relationships we are building up with LCC and the Forestry Commission to mutual benefit. PMBA enjoys a healthy financial foundation, able to support training events for our supporter groups wherever their leadership can be applied, able to fund insurance for our trail builders and to facilitate the purchase of tools and equipment for our volunteer activities.

**PMBA** supports other local projects. We have successfully facilitated the development of a downhill trail complex at Cock Hill. Originally an illegal development by enthusiasts on private land it was forceably dismantled. Cock Hill was successfully secured with PMBA guidance for public use by negotiating with the landowners and with the proper preparation, construction and legal controls has recently opened to the public. It is already proving popular within a specialist riding community that suffers from few opportunities. The site is already attracting the attentions of British Cycling as a potential training and competition venue.

**PMBA** is becoming a growing source for quality information to the MTB community. The website has served us very well through the period, conceived and maintained by our own Jon Swift. Consult here if you are visiting for the first time to discover where to ride or regulars enter the library to catch up on past minutes, or latest proposals as all members are able to do. The PMBA message and discussions are promoted through the successful use of social media particularly Facebook, that has attracted more than 900 followers to endorse our work, and feed us with worthwhile causes as a listening organisation too. At the preset rate of growth we could easily reach 1000 supporters by year end. Seriously well done!



**PMBA** has campaigned for the introduction of toilets at our major visitor attractions particularly Lee Quarry and Gisburn, both these become available over the last year. Portable loos appeared at or near Futures Park Lee Quarry, and with the opening of the trailhead car park at Gisburn so the cafe at Stephen Park has opened and their facilities are available to riders. Eco toilets at Gisburn are promised but that may take a little longer – but another just and successful campaign.

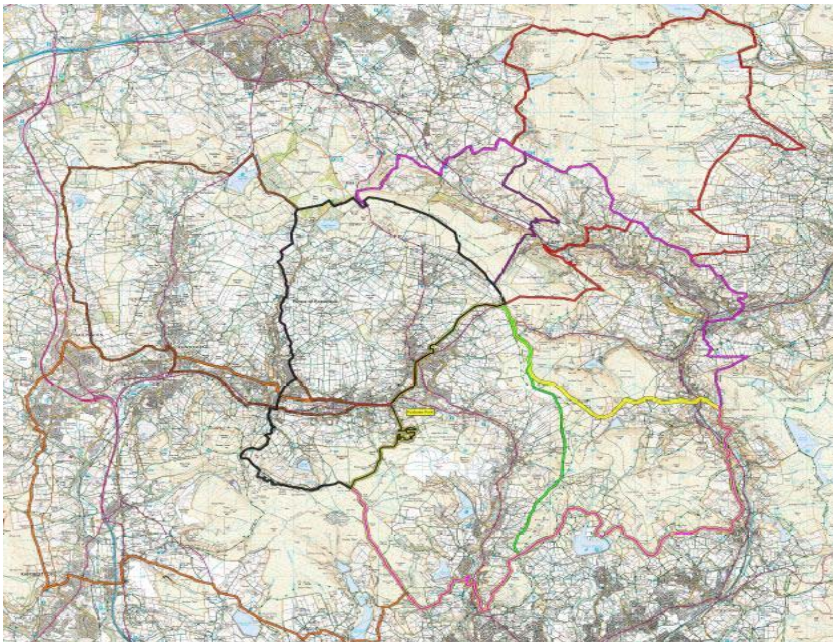
**PMBA** secretary Jon Swift conceived a series of new routes around the area being known as the Roaring Boar Routes. These will provide visiting and local riders to the Rossendale Valley and to Lee Quarry with a new set of guided challenges, diversifying the rider

attention to carefully managed and sustainable trails. Living within a spit of Deerplay Moor Jon has also charmed us with a tidy piece of work to develop the area which will link Crown Point, and the Pennine Bridleway with Todmorden and other trails towards The Long Causeway and Burnley.

**PMBA** is proud of its connection with well respected associates, intellectual contributors and sponsors. Our associates including LCC, FC, SingleTraction, Ride On, Brownbacks guide our direction as we work together to improve the lot available to the riders. The contributors of Rossendale Council enable us to target funding applications perfectly and match funding opportunity with our awaiting projects. Sponsors provide a comforting endorsement of our everyday activity – names like Back On Track who built some of our best machine built trails, Hope represent the pinnacle of local engineering, improve our riding, and enable us to bling up our riding machines, and also contribute to the construction of the Gisburn trail of the same name.

**PMBA** today demonstrates and justifies its existence in all the above diverse ways in serving the mountain bike community, far exceeding our original visions and breaks the mould of being an angry boy campaigner as the original inclusion of the word “Action” in the title PMBA might have implied. We have altogether changed the way we feel about our work and recognised this by agreeing at the AGM last April a change in our name to **Pennine Mountain Bike Association (PMBA)**.

**For the future PMBA will, I trust, carry a similar banner to a small but caring building firm. No complaint or project suggestion too small not to be heard, no project too large to conceive. The future of Mountain Biking in our region has its champion, PMBA.**



The Rolling Boar Trails.

To see the trail maps in a more readable format just go to the members section of the website.

## Membership , Facebook and the Website

*By Jon Swift*

*PMBA Secretary*

**PMBA** is all about representing local riders interests so that the powers that be have a body locally to consult with when opportunities to develop mountain biking are discussed. With this in mind it is gratifying to see that our membership has increased dramatically in 2013. We now have over **110** paid up groups and individual members, many of whom have joined during 2013. Our group members are particularly important as between them they represent many hundreds of Mountain Bikers and so add greatly to our clout. This has happened without a significant effort from us to generate new members and can only be down to word of mouth amongst the riding community. From our point of view this is great news as it means we must be doing something right. Hopefully we will continue to do what the membership want and we'll see many of these new members renew in 2014 as well as gaining support from new members. Feedback is always important to us and something we would encourage our members to do via the website, email or to come along to one of planning meetings.



PMBA will be supporting new and improved events in 2014

Membership is important to us, handing over a fiver is a lot more significant than clicking a Like button on Facebook. It's what gives us credibility and the drive to keep putting the hours in knowing riders value what we're doing. In return for this support we like to share a little bit more with our members who have access to meeting minutes and other more detailed project information before the general population via our website. The PMBA website has developed into a very important resource for mountain bikers and a big part of next year's plan is to update and improve what we have, adding content such as map downloads and strengthening news and info sections. This year the website received **32,000** visits! As well as the PMBA website we have our Facebook group and this ideal for getting information out to the wider MBR network. There are now over **900** members of the group and this is growing steadily.

## Finances

*By Ronnie Barker*

*PMBA Treasurer*

**PMBA** is all about Teamwork. I may not be able to ride a Mountain Bike through the Pennine Quarries, Forests and Gullies anymore but I can give support to such healthy activities and have the added advantage of 'virtual riding' from the seat in front of my PC along the courses shared by our members helmet-cams.

Our Finances are also in a healthy shape due to the efforts of all our PMBA Members. We set off the current year in April 2013 with an overall Bank Balance of £655, £400 of which was held on behalf of our Gisburn Members to save them the duplication of unnecessary Administration Costs. Throughout the year to date, Individual



Significant trail improvements, such as here on Deerplay, are made possible because we can bid as a strong membership organisation

Memberships and Donations have brought in £330, with a further £242 from our Corporate Supporters.

Working in Partnership with LCC, and being accepted as Members of Entrust, we have been able to secure £8765 from the Lancashire Environment Fund towards the £29,218 costs for a Pennine Bridleway Linking Route from Town Bent to Hoyle Bottom. Our reputation, credibility and excellent relationships with County have been further enriched with a £3,500 'Ring-fenced' Grant towards Insurance, Training and Development costs.

Our healthy state of affairs has allowed us to finance a Gisburn Tools Programme in advance of their successful application for a Green Partnership Award so that they can continue with their excellent Trail building in the Gisburn Forest in a more efficient manner. What a privilege to be able to help Organisations that give so much to the Mountain Biking Scene and to **PMBA** itself.

As of today we are in credit at the Bank to the tune of £3240 which will be swelled back to the £4K mark once the £800 Gisburn Tools Award is received in the next few days.

It's a pleasure to be a part of your **PMBA**.

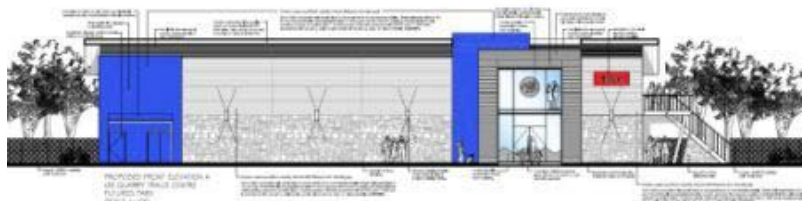
## Events and Communication

*Kev Duckworth*

*Events and Communication Co-ordinator*

It's a little over 6 months since I was voted into both newly created positions in PMBA, for events and communications. In that time PMBA has had its first involvement in Enduro with the oversubscribed race at Gisburn Forest going down really well. Plans are already on with extending this into a series at various venues for 2014 - dates to be out soon. The event generated some funds for PMBA although this was not its primary aim and as such it was run by Borderline events, one of our corporate sponsors. The generated publicity for Gisburn and PMBA was the main aim seems to have been achieved at both local and national level. Social media has been expanded from the Facebook group to include a twitter account; PMBA's Twitter account has had a steady start but already into 3 digit followers.

Personally I'm very proud to be a part of **PMBA** and the work it does, and although I have struggled a bit this year to find as much time as I would have liked good progress has been made.



The proposed Ride On Cycling Centre at Lee Quarry. To keep up to date with this key project via the PMBA website and social media feeds.